

**THE CHARLES E. SCHMIDT
COLLEGE OF SCIENCE
STUDENT
HANDBOOK**



**NAVIGATING THE
ACADEMIC WATERS**

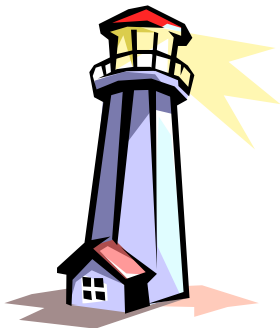
Written and developed by: Shari Goldstein and Maria Thompson Llamas Errar
Last updated 5/8/09



Table of Contents



Navigating the Academic Waters →	Lighthouse for Success	3
Duty Roster →	Whom to See	4
OASIS →	Online Registration	5
All Aboard →	Introduction	6
Docking Stations →	Departments	7
Your Compass →	Academic Advising	8
Welcome Aboard Mates! →	New Transfer Students	10
Setting Sail →	Registration Procedures	11
Drop and Add Period		
DIS		
Course Loads		
Unlinks		
Overrides		
Financial Aid		
Test Scores		
Weathering Stormy Waters →	Academic Procedures	13
Incompletes		
Duplicate Credits		
Pass-Fail Option		
Forgiveness Policy		
Hazardous Reefs →	Barriers to Success	15
Probation, Suspension and Dismissal		
Academic Grievance Procedures		
Academic Petitions		
Charting Your Course →	Intellectual Foundation	17
Intellectual Foundation		
Gordon Rule		
CLAST		
Foreign Language		
Your Final Destination →	Graduation Procedures	22
Sailing in the Right Direction? →	Career Planning	23
Upper Division Requirement →		24
Long term Planning Worksheet →		25
Class Schedule Worksheet →		26



NAVIGATING THE ACADEMIC WATERS

Lighthouse for Success

PREFACE

This Handbook is intended to serve as a guide to majors within the Charles E. Schmidt College of Science. Students should use this handbook as a reference to pertinent university, college, and departmental requirements. Requirements may vary depending on classification upon entry into FAU (i.e.: transfer students with an AA degree, transfer students without an AA degree, core freshman, etc.). Students should pay **careful attention** that he/she **reads** the requirements that apply in his/her case. Note: Graduation requirements may vary for these different classifications of students, and may also vary depending on the student's year of matriculation. While every attempt has been made to ensure that the information in this handbook is accurate and up-to-date, students should keep in mind that the "**final authority**" is the University catalog.

MISSION STATEMENT

FOR STUDENT SERVICES OFFICE OF THE CHARLES E. SCHMIDT COLLEGE OF SCIENCE

The primary mission of the student services office is to be a source of academic support for students and faculty. This office coordinates support services designed to enhance the academic experience of the undergraduate majors in the Charles E. Schmidt College of Science. It is our goal to play a major role in student retention and to provide students the support necessary for the successful completion of their degree.



THE DUTY ROSTER

Whom to see...For what...Where??

		(561) 297-
		Ext.
Academic petitions (undergraduate)	Student Services Office (SE 234)	3700
Admissions (undergraduate)	Admissions Office (SU 117)	2618
Bookstore	SS-8W	3720
Campus Recreation	GYM 111	3795
Career Information	Career Development Office (SU 220)	3533
Dean of Students Affairs	SSB 226	3542
Office for Students with Disabilities	SU 133	3880
Drop/Add Information	Registrar's Office (SU 144)	3041
Employment (for student's)	SU 233	3521
Fees and payment	Controller's Office (SU 227)	3100
Financial Aid	SU 233	3530
Graduate Studies	SU 101	3624
Greek Affairs	SSB 226	3542
Health Services	SS-8W 233	2276
Immunization	SU 114	1117
Housing	SHS 234	2880
International Programs	SU 106	3227
International Student Services	SU 214	3049
Library	Information LY 132	3770
Medical Withdrawals	SSB 224	3959
Multicultural Affairs	SSB 224	3959
Ombudsman	Barbara J. Rice	3693
Parking Decals	Traffic and Parking	3500
Police (University)		3500
Registration/ Records	Registrar's Office (SU 144)	3050
Residency Classification	SU 144	2408
Scholarships	Student Financial Aid (SU 233)	3530
Student Government	UC 210	3740
Student Services Office (Science)	Boca Raton Campus S&E 234	
Dr. Ingrid Johanson, Senior Associate Dean		3700
Maria Thompson-LLamas Errar, Associate Director		2630
Shari Goldstein, Assistant Director, Pre-professional Studies		0064
Glen Malone, Academic Coordinator		1314
Latarsha Morgan, Freshman Advisor, Pre-professional Studies		0685
Corine Nelson, Program Assistant		3700
Pre-Health Professions Secretary		3307
Student Services Office (Science) Davie Campus		
Ruben Ferguson, Academic Coordinator		954-236-1103
Testing	SU 210	3160
Tutoring	Multicultural Affairs SSB 224	3959
Freshman Advising	SU 201	3064
Withdrawals from University	Registrar's Office (SU 144)	3041

MYFAU - FAU SELF-SERVICE (OWLS)

View Student Records:

- ✓ Check grades
- ✓ Unofficial transcripts
- ✓ Check holds

View Personal Information:

- ✓ Check and update your mailing address
- ✓ Check and update your e-mail address
- ✓ Request to change your name

View FAU Catalogs:

- ✓ View undergraduate and graduate catalogs

Cashiers Office:

- ✓ View your bills
- ✓ Pay your fees

Registration and Schedule:

- ✓ Find courses
- ✓ **Register for classes**
- ✓ Drop/Add classes
- ✓ Print schedule

Financial Aid:

- ✓ Check your financial aid application status

Go to www.FAU.edu

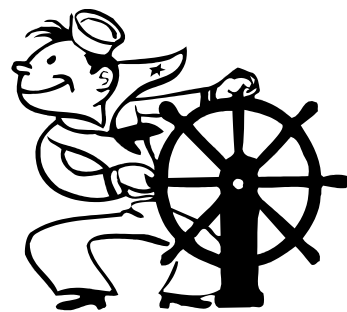
Scroll over **Current Students** button

Click on **MYFAU**

Log in using your **USERNAME** and **PASSWORD**

Once logged in to MYFAU – Click on **FAU SELF-SERVICE**

ALL ABOARD!
Introduction to the
Charles E. Schmidt College of Science



The Charles E. Schmidt College of Science at Florida Atlantic University has long been recognized for the high quality of its academic programs and for the accomplishments of its faculty in the areas of research and scholarship. The faculty is committed to excellence in teaching, as well as to the concept of individualized training of research skills. Students find our programs intellectually challenging and we offer a supportive environment in which to develop potential for careers in all areas of science. The college is small enough to provide the personal attention that sparks the creativity and curiosity of students, but large enough to ensure their access to talented faculty and modern facilities and equipment. The Charles E. Schmidt College of Science also offers graduate and doctoral programs in many of the same areas listed below. Please refer to the catalog for more information.

Undergraduates may choose a major in any of the following:

BIOLOGY: B.A., B.S. in Biology; Certificate Programs in Biotechnology and Environmental Science

CHEMISTRY: B.A., B.S., in Chemistry and B.S. in Chemistry – Biochemistry track

PSYCHOLOGY: B.A. in Psychology, B.S. In Psychobiology

GEOSCIENCES: B.A., B.S. in Geology and Geography, Certificate Program in Geographic Information Systems

MATHEMATICS: B.A., B.S. in Mathematics, and Certificate Program in Statistics

PHYSICS: B.A, B.S. in Physics

Interdisciplinary: PRE-PROFESSIONAL STUDIES MAJOR AND CERTIFICATE



DOCKING STATIONS (Departments)

BIOLOGICAL SCIENCES
SANSON SCIENCE BUILDING ROOM 136
(561) 297-3320

CHEMISTRY AND BIOCHEMISTRY
PHYSICAL SCIENCE BUILDING ROOM 110B
(561) 297-6915

DEAN'S OFFICE
SCIENCE AND ENGINEERING BUILDING ROOM 256
(561) 297- 3035

GEOSCIENCES
PHYSICAL SCIENCE BUILDING ROOM 336
(561) 297-3250

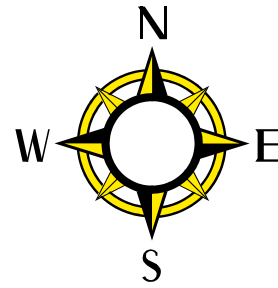
MATHEMATICAL SCIENCE
SCIENCE AND ENGINEERING BUILDING ROOM 212
(561) 297-3340

PHYSICS
SCIENCE AND ENGINEERING BUILDING ROOM 110
(561) 297-3380

PSYCHOLOGY
BEHAVIORAL SCIENCE BUILDING ROOM 101
(561) 297-3361

STUDENT SERVICES OFFICE
SCIENCE AND ENGINEERING BUILDING ROOM 234
(561) 297-3700

YOUR COMPASS



The Role of Advisors in Academic Advising

Advising is an essential part of a students' admittance into the Charles E. Schmidt College of Science. Therefore, the college places an advising (**SC**) hold on all incoming undergraduate transfer student's registration. It is placed to ensure all students receive proper academic advising prior to first time registration.

There are two types of advisors in the Charles E. Schmidt College of Science, **Academic Advisors** and **Faculty Advisors**.

Academic Advisors

Located in Student Services Office for the College
Responsibilities:

1. Advise all new transfer students:
 - Review the Intellectual Foundation requirements, including Gordon Rule requirements
 - Inform students of their major requirements
 - Discuss how transfer credits may apply
 - Remove **SC** hold allowing the student to register for classes
2. Conduct SASS audits* and enter any substitutions that are approved by the student's Faculty Advisor (*SASS refers to Student Academic Support System – an online **degree audit system** available to you at www.facts.org. (See below for more information).
3. Complete the process of applying for graduation
4. Counsel students re-entering the University after suspension for academic difficulties and clear the student's **SS** (Suspension) hold

The **Academic Advisors** in the Charles E. Schmidt College of Science Student Services Office are:

<u>Maria Thompson- LLamas Errar</u> (Boca Campus)	(561) 297-3700
<u>Shari Goldstein</u> (Boca Campus)	(561) 297-3700
<u>Latarsha Morgan</u> (Boca Campus)	(561) 297-3700
<u>Glenn Malone</u> (Boca Campus)	(561) 297-3700
<u>Ruben Ferguson</u> (Davie Campus)	(954) 236-1103

Faculty Advisors

The second type of advisor in the Charles E. Schmidt College of Science is a Faculty Advisor. A Faculty Advisor is a faculty member of one of the several departments within the College. A Faculty Advisor is not automatically assigned. **It is YOUR RESPONSIBILITY TO OBTAIN ONE!!** Students should make contact with their major department during their first semester of attendance to request the assignment of a faculty advisor. The Faculty Advisor is available to:

- Explain departmental requirements
- Explain departmental policies and procedures
- Approve course substitutions to be used toward major requirements
- Review the student's records and verify that all departmental degree requirements are met for graduation
- Discuss research/DIS options
- Discuss career opportunities
- Discuss graduate school options.



ASK THE OWL

In an effort to make sure that students' questions are always answered, the Charles E. Schmidt College of Science also has an online advising system, "**Ask the Owl**". The system can be accessed through the college's web site: <http://www.science.fau.edu/>. This gives the student an opportunity to have an advising question answered without having to visit the Student Services Office. It also allows the student to remain anonymous when making an inquiry.

SASS and FACTS:

Visit www.facts.org to review your transcript and degree audit. You should refer to this site frequently to monitor your progress toward your degree. Any discrepancies between your SASS audit and your understanding of your degree requirements should be brought to the attention of one of the Student Services Office Academic Advisors.



WELCOME ABOARD, MATES! Procedures for new transfer students

A transfer student is a student that transfers to Florida Atlantic University with 30 or more credit hours. These are the necessary STEPS TO SUCCESS that all transfer students are encouraged to follow:

- Step 1** Transfer student applies to FAU. Once the student is admitted he/she should...
- Step 2** Complete the University virtual orientation online or attend the University in-person orientation then...
- Step 3** **Students without an AA degree** must call (561) 297-3700 to schedule an appointment with an Academic Advisor.
- Students with an AA degree** (from a Florida Public institution) must additionally complete the Charles E. Schmidt College of Science Virtual Orientation and E-Advising using this link:
http://www.science.fau.edu/student_services/virtual_orientation.pdf
- Note: A Registration (SC) hold is in effect until step 3 is completed.
- Step 4** Students will then register for classes online in MYFAU.
- Step 5** During their first semester of attendance, the student should meet with a Faculty Advisor in the major department to have any degree substitutions approved. Once this is done, the student should...
- Step 6** Bring approved substitutions signed by their Faculty Advisor to an Academic Advisor and a SASS audit will be completed.
- Step 7** As needed, a student will meet with their Faculty Advisor to discuss their progress toward their degree, career plans, or plans for graduate school. You can review your SASS audit at any time to check on your progress toward your degree (go to www.facts.org).
- Step 8** When the student is approaching completion of the degree requirements, he or she needs to meet with a Faculty Advisor to complete a departmental graduation audit. You should then...
- Step 9** Meet with an Academic Advisor in Student Services to complete a final graduation check and the Application for Degree.

SETTING SAIL

Student Registration Procedures



New students must register during the regular registration period after meeting with an advisor *or* at orientation. Continuing students can take advantage of advance (or pre-) registration to enroll in courses, or, alternatively, can register during the regular registration period. Whenever possible, it is to the student's advantage to register early during advance registration. **Realize this is a large university and classes fill-up quickly.**

Although the student is not required to meet with their Faculty Advisor in order to register, it is **highly recommended** that students periodically meet with their advisor to discuss their program of study and to monitor progress toward graduation.

During the first week of classes, there is a **Drop/Add period** in which the student may add or drop courses without being fee liable. This requires completion of a Registration- Drop/Add Request form.

In order to register for **Directed Independent Study**, the bottom portion of the Registration-Drop/Add Request form must be completed and signed by the person with whom the student will be working.

ENROLLMENT RESTRICTION - COURSE LOADS

To be considered full-time, the student must be registered for 12 credits in any semester, up to a maximum of 18 credits. During the summer semester, the maximum load is 9 credits each for short terms 2 and 3, and 18 credits for the full-term 1. The total of term 1 enrollment plus twice the term 2 (or 3) enrollment cannot exceed 18 credits. Special permission must be given from the Associate Dean for Student Services to take credits beyond the maximum number permitted.

UNLINKS:

Linked courses are two corresponding course sections that must be taken in the same term and most often include a lecture section and a lab/discussion section. If for some reason, you need to take a lecture without the corresponding lab or vice versa, you **MUST** get permission to unlink the classes by the department in which the course is offered. You must then register in person for the course.

DROPPING a course that has a linked lab does not automatically drop you from the lab. If necessary, you need to drop the lecture **AND** the lab.

OVERRIDES:

If a course you want is closed, you will not be able to register for it without an override. You must obtain the instructor's signature on the Drop/Add form followed by a departmental stamp from the department in which the course is offered. **Override approval will not be processed without the college override stamp.** You must then register in person for the course.

When the enrollment in a course has reached its room size limit, NO additional students can be added to the class even with a departmental override stamp. No exceptions can be made!

FINANCIAL AID:

All students interested in financial aid of any type should apply through the Office of Financial Aid (SSB227, 297-3530). This includes applications for scholarships, loans, and college work-study. For more information refer to the following website, http://www.fau.edu/student/fin_aid.htm. Normally, a student must register for 12 credits to be considered full-time for financial aid purposes.



TEST SCORES:

All official CLEP, AP, etc. test scores must be sent directly to FAU. We will not post test scores from the transcripts of other institutions. You must contact the administrators of these tests directly:

CLEP
P.O. Box 6600
Princeton, NJ 08541-6600
(609) 951-1026

AP
P.O. Box 6671
Princeton, NJ 08541-6671
(609) 771-7300

SAT
P. O. Box 10016
Carbondale, IL 62902-9016
(609) 771-7600



WEATHERING STORMY WATERS Academic Procedures

INCOMPLETE WORK

A student who is passing a course but has not completed all the required work because of exceptional circumstances may, with the approval of the instructor, receive a grade of Incomplete "I". The "I" indicates a grade deferral and must be changed to a grade other than "I" within a specified time, not to exceed one calendar year from the end of the semester during which the course was taken. The instructor will record in writing, and file with the Registrar, the work that must be completed for a final grade, the time frame for completion, and the grade that will be assigned if the work is not completed. It is the student's responsibility to make arrangements with the instructor for the timely completion of this work. Note: that a student **should not** re-register for the course in which they are finishing the work for an "I". All "I" grades must be resolved before the student is permitted to graduate.

DUPLICATE CREDIT

Students cannot earn credit for the same course twice. For example, if a student takes general psychology in the fall semester and receives a "D", and then takes it over in the spring and receives a "B" (without applying the forgiveness policy), the student will not earn 6 credits, but only 3 for graduation purposes. However, both grades will be averaged into the GPA. Even if the original course was taken at another institution and repeated at FAU, duplicate credits will not be awarded for the same course.

PASS-FAIL OPTION

In certain designated undergraduate courses, students may elect to receive a grade of Pass (P) or Fail (F) rather than a standard grade. The deadline date for students to change a grade option is during the first week of class, known as the Drop/Add period. After the Drop/Add period, students will still be permitted until the third week of class to make changes to the grading option. This requires the student to fill out an "Undergraduate College Petition form". It can be picked up in the Student Services Office of the College. Note: the maximum credit available to any student on a pass-fail option is ONE course per term, up to a total of 12 credits. Students on probation may not opt for the pass/fail option. The pass/fail option is not available to a student for a course in his/her major. Students may not elect the pass/fail option for courses they are using to satisfy the Gordon Rule writing or math requirements

FORGIVENESS POLICY

This policy allows any undergraduate student to repeat a course and allow only the last grade to count in the GPA. Students will be allowed to apply the forgiveness policy at any time prior to graduation. To apply the forgiveness policy, the course must be taken at FAU and repeated at FAU. This policy may be applied only twice during a student's study here and must be requested by the student for each course repeated. Repeated Course Request Cards are available in the Office of the Registrar. This policy does not remove the previous grade from the transcript but eliminates the effect of that grade on the FAU cumulative GPA by removing it from the computation.

* Please note that graduate and professional schools may count both grades when doing their own calculation of your GPA.

HAZARDOUS REEFS...

Common Barriers to Student Success



ACADEMIC PROBATION, SUSPENSION AND DISMISSAL

To remain in good standing, each student must maintain a 2.0 GPA (on a 4.0 scale) at FAU. A student other than a first semester freshman who fails to earn a satisfactory GPA in any term will be placed on **probation**. A student who fails to earn a 2.0 GPA on all work attempted in any term but has a cumulative average of 2.0 or higher at FAU will be continued on academic probation. A student on academic probation who earns a 2.0 GPA or higher in the next period of enrollment but whose cumulative average at FAU is lower than a 2.0 will be continued on probation.

*Academic probation may be removed only by earning a 2.0 GPA or higher in all work attempted in the next period of enrollment and having a cumulative average of 2.0 or higher at FAU.



A student on probation who fails to earn a 2.0 GPA in all work attempted in any term and has a cumulative average lower than a 2.0 at FAU will be **suspended** from the University. The student is eligible to return after a minimum of one semester and, if permitted to return, will be on academic probation. **SS holds** are placed on all suspended students in this college. The student will be required to meet with an Academic Advisor for counseling before future registration.

If at any time after having once been suspended a student on probation has a term and cumulative average below 2.0, the student will be **dismissed** from the University and not be eligible to return for at least one year. A student may petition for readmission to the University following dismissal after one year has passed. If the student is dismissed a second time, they are not eligible to return.

ACADEMIC GRIEVANCE PROCEDURE

Students with a grievance against an instructor regarding academic matters should follow the Academic Grievance Procedure under "Academic Irregularities" in the catalog. The steps are as follows:

- Discuss the grievance with the instructor
- If satisfactory resolution is not obtained, the student may request a conference with the instructor and department chair.
- A memorandum of action taken at this conference should be sent to the student in writing by the department chair.
- The student may appeal the action to a college faculty/student council through a written request submitted within 10 days of the departmental conference.

The same procedure applies if an instructor accuses the student of an academic irregularity, with the instructor initiating the action.

ACADEMIC PETITIONS

Students who find that a particular academic regulation of the University is causing them undue hardship may appeal to the Academic Petitions Committee. This committee does not concern itself with grievances against instructors (follow procedure outlined above). A petition form may be obtained from the Student Services Office, SE 234 on the web at http://www.science.fau.edu/student_services/new/forms/undergradpet.pdf. You need to attach any pertinent information in support of the petition (i.e.: medical reports, records, verifying letters, memos from instructors, etc.). The student should be aware that petitions are not automatically granted, and that petitions are approved only when the committee is convinced that a true hardship will exist if it does not take a positive action. Some of the common requests are:

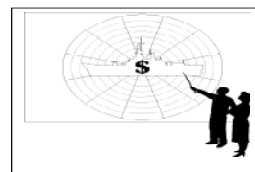
- Permission to drop/withdraw from a class after the final deadline
- Reinstatement after dismissal

Common problems that lead a student to petition can be easily avoided.

- **Check your schedule carefully** to ensure that you are registered in the correct classes.
- Do not assume that you will be cancelled for nonpayment of fees, so you don't need to drop. If you don't plan on attending, **drop the class**.
- **Be aware of the deadlines to drop** without a W and to drop with a W.
- **Check the pre-requisites** for courses for which you register. Make sure you are prepared to take the class.
- If you become ill during the term for an extended period of time, contact your instructor. You may be able to receive an "I" (deferred) grade. If you cannot, you should DROP the class. If it is past the drop deadline, then you should petition to drop the class during the term. Procrastination does not pay off.

CHARTING YOUR COURSE

Intellectual Foundation Requirements



I - Foundations of Written Communication (6 credits required)

ENC 1101: College Writing I
ENC 1102: College Writing II
ENC 1930: Honors Writing Seminar

II - Foundations of Mathematics and Quantitative Reasoning (6 credits required)

MAC 1140: Precalculus Algebra
MAC 1114: Trigonometry
MAC 1147: Precalculus Algebra and Trigonometry
PHI 3132: Logic
MAC 1105: College Algebra
MAC 2233: Methods of Calculus
MAC 2311: Calculus with Analytic Geometry 1
MAC 2312: Calculus with Analytic Geometry 2
MAC 2281: Calculus for Engineers 1
MAC 2282: Calculus for Engineers 2
MGF 1106: Mathematics for Liberal Arts 1
MGF 1107: Mathematics for Liberal Arts 2
STA 2023: Introductory Statistics

III - Foundations of Science and the Natural World (two courses from different departments - one with lab)

ANT 2512: Introduction to Biological Anthropology
GLY 2010: Physical Geology/Evolution of the Earth
ESC 2070: The Blue Planet
GLY 2100: History of the Earth and Life
MET 2010: Weather and Climate
CHM 1020: Contemporary Chemical Issues
CHM 2032: Chemistry for the Health Sciences
CHM 2083: Chemistry in Modern Life
CHM 2045: General Chemistry 1
ETG 2831: Nature: Intersections of Science, Engineering and the Humanities
PHY 2043: Physics for Engineers 1
PHY 2048: General Physics 1
PHY 2053: College Physics 1
PSC 2121: Physical Science
AST 2002: Introduction to Astronomy
BSC 1010: Biological Principles
BSC 1011: Biodiversity
BSC 1005: Life Science
BSC 2085: Anatomy and Physiology I

IV - Foundations of Society and Human Behavior (6 credits required)

ANT 2000: Introduction to Anthropology
SYG 1000: Sociological Perspectives
SYG 2010: Social Problems
PSY 1012: General Psychology
ECO 2023: Microeconomic Principles

ECO 2013: Macroeconomic Principles
POS 2041: Government of the United States
EVR 2017: Environment and Society
PAD 2258: Changing Environment of Business, Society and Government
URP 2051: Designing the City

V - Foundations in Global Citizenship

(6 credits required; two courses from different departments - one must be in Global Perspectives)

Western Identities

SYD 2530: Race, Class, Gender, and Sexuality
PHI 2010: Introduction to Philosophy
AMH 2010: United States History to 1877
AMH 2020: United States History 1877 to Present

Global Perspectives

SYP 2456: Global Society
ANT 2410: Culture and Society
WOH 2012: History of Civilization I
WOH 2022: History of Civilization II
LIN 2000: Global Perspectives on Language
GEA 2000: World Geography
EDF 2600: The Educated Citizen in a Global Context
SOW 1005: Global Perspectives on Social Services
INR 2002: Introduction to World Politics

VI - Foundations of Creative Expression (6 credits required)

FIL 2000: Film Appreciation
ARH 2000: Art Appreciation
MUL 2010: History and Appreciation of Music
ARC 2208: Culture and Architecture
LIT 2010: Interpretation of Fiction
LIT 2030: Interpretation of Poetry
LIT 2040: Interpretation of Drama
DAN 2100: Appreciation of Dance
LIT 2103: Global Great Books: Travel Tales
THE 2000: Appreciation of Theatre

If you have an A.A. degree from a Florida Public Community College, you have met these requirements.

Communication and Computation Skill Requirements at FAU (Gordon Rule)

This rule requires students to successfully complete, with grades of "C" or higher, 12 credits of writing (6 credits of English and 2 additional courses) and 6 credits of mathematics. *Students transferring from out-of-state institutions, who think they may have completed Gordon Rule equivalent courses with grades of "C" or better, must obtain a letter from the previous institution that demonstrates they have fulfilled the writing criteria. Such letters should be mailed directly to the Office of the Registrar at FAU.*

Communication Skills – Writing Across the Curriculum (WAC)

Required (6 credits of English course work):

College Writing 1	ENC 1101
*(All students must take ENC 1101; there are no substitutes for this course.)	
College Writing 2	ENC 1102
*(Students must take ENC 1102 or one of the substitutes for ENC 1102 appearing below.)	

WAC (Gordon Rule) substitutes for ENC 1102:

Cultural Difference in a Globalized Society	ANT 1471
Advanced General Chemistry 2	CHM 2051C
University Scholars Seminar in Writing	ENC 1930

Required (6 credits of additional writing course work):

University Scholars Seminars	XXX 1930
Cultures of South Asia	ANT 3361
Classical Greek Literature	CLT 2101
Classical Roman Literature	CLT 2120
Economics of Poverty and Discrimination	ECP 3125
From Toys to Engineering	EML 2003C
Writing for Management	ENC 3213
Advanced Exposition	ENC 3310
Principles of Research Writing	ENC 4138
Studies in Writing and Rhetoric	ENG 4020
Europe: Language, Culture and Identity	EUS 3004
Topics in Historical Investigation	HIS 2934
Introduction to Historical Study	HIS 3150
Senior Seminar	HIS 4935
Honors Reading Seminar	IDH 4931
Advanced Systems Analysis and Design	ISM 4133
Italian-American Cinema	ITT 3522
Introduction to Latin American Studies	LAS 3002
Language Matters	LIN 3003
Interpretation of Fiction	LIT 2010
Interpretation of Poetry	LIT 2030
Interpretation of Drama	LIT 2040
Nursing Research	NUR 4165
Critical Thinking in Nursing	NUR 4845
Senior Seminar in Public Management	PAD 4935
Introduction to Philosophy	PHI 2010
Profession of Social Work	SOW 3302
The Rhetoric of Argument	SPC 4517
Rhetorical Criticism	SPC 4680

Writing Social Theory	SYA 4511
Caribbean Inequalities	SYD 4631
Planning and Growth Management	URP 3000
History of Civilization 1	WOH 2012
Introduction to Women's Studies	WST 2010
Green Consciousness	WST 4349

**Computation Skills —
Gordon Rule Mathematics**

College Algebra	MAC 1105
Trigonometry	MAC 1114
Precalculus Algebra	MAC 1140
Precalculus Algebra & Trigonometry	MAC 1147
Methods of Calculus	MAC 2233
Life Science Calculus 1	MAC 2241
Life Science Calculus 2	MAC 2242
Calculus for Engineers 1	MAC 2253
Calculus for Engineers 2	MAC 2254
Calculus with Analytic Geometry 1	MAC 2311
Calculus with Analytic Geometry 2	MAC 2312
Discrete Mathematics	MAD 2104
Differential Equations 1	MAP 2302
Topics in Mathematics	MAT 1932
University Scholars Seminar in Mathematics	MAT 1935
Math for the Liberal Arts 1	MGF 1106
Math for the Liberal Arts 2	MGF 1107
Logic	PHI 3132
Experimental Design and Statistical Inference	PSY 3234
Topics in Statistics	STA 1932
Statistics in Practice	STA 2022
Introductory Statistics	STA 2023
Intermediate Statistics and Lab	STA 3163&L

COLLEGE LEVEL ACADEMIC SKILLS TEST (CLAST)

The CLAST is an achievement test designed to measure students' attainment of college – level communication and mathematics skills. The test consists of four subject areas: essay, English language skills, reading and mathematics.

Students' seeking an AA degree or Baccalaureate degree from a public institution of higher education in Florida are required to pass all four subtests of the CLAST within a specific time frame. At least **3** parts of the CLAST must be passed by the time a student reaches upper division status (60 credits). Failure to meet this criterion will result in a **registration hold**. No student will be permitted to register if they have reached **96 credit** hours and have not satisfied all four subtests of the CLAST.

There are some alternate means of fulfilling the CLAST exam. Please refer to the catalog or see your Academic Advisor for more information.

The University Testing and Evaluation Office (Student Services Building RM 229) can provide information on when and how to apply to take the CLAST.

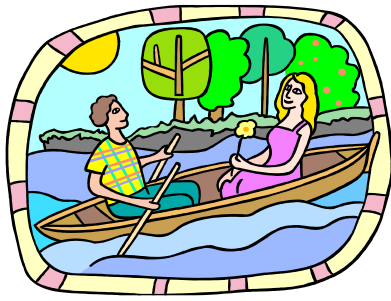
FOREIGN LANGUAGE

Foreign Language Admissions Requirement: All students must meet the statewide foreign language admissions requirement. Those who do not meet this requirement may be admitted with the condition that they fulfill the requirement by completing a two-semester sequence in foreign language prior to graduation. Students may meet the requirement by having completed two years of foreign language sequence in high school or eight or more semester hours of a foreign language sequence in a previously attended institution.

Note: American Sign Language satisfies the criteria of a foreign language for ADMISSION PURPOSES ONLY.

Foreign Language Graduation Requirement: High School foreign language does **not** satisfy the foreign language graduation requirement. Students seeking a Bachelors degree from FAU must fulfill the foreign language graduation requirement by one of the following options:

- Completion of the first year college level sequence in one foreign language (1120 & 1121)
- Completion of the second semester of a first year sequence or higher (1121 or higher)
- Achievement of a satisfactory score (for which two semesters of credit are granted) on the College Level Examination Program (CLEP), Advanced Placement (AP), or International Baccalaureate (IB) standardized foreign language exam.
- For foreign and bilingual students: Certification of Proficiency in a language other than English by the Department of Languages and Linguistics.
- Native speakers of French, German and Spanish must attempt the CLEP test.



YOUR FINAL DESTINATION... MAKING LANDFALL Graduation Procedures

If you feel you are close to graduation, refer to the academic calendar for the **Graduation Application Deadline**. You must complete a **departmental graduation audit** with your Faculty Advisor. Your next step is to call to make an appointment with one of the Academic Coordinators in the Student Services Office, (561) 297-3700, to do your **college graduation audit**. Students that do NOT apply for graduation before the deadline can have their graduation delayed by one semester. This procedure must be repeated if the student does not graduate in the expected term.

New students should keep a copy of the University Catalog that was in effect at the time of their admission. The catalog is, in essence, a contract between the student and the University as to what the student must do to earn their Baccalaureate. This means that any changes in degree requirements that occur after a student has been admitted will not apply to that student. HOWEVER, if the student discontinues enrollment for more than one year, their enrollment must be reactivated and new requirements will then apply.

GRADUATION REQUIREMENTS

To earn a Baccalaureate degree from FAU, students must:

1. Earn a minimum of 120 credit hours
2. Earn a minimum **2.0 FAU** GPA
3. Earn a minimum of **45** out of these **120** credit hours at the upper division level (3000 level and above)
4. Earn the last **30** upper division credit hours in residence at FAU.
5. Earn at least **50%** of all upper division courses in the major department from FAU.
6. Fulfill the Core curriculum or Intellectual Foundation requirements that are appropriate to the student's admission status.
7. Satisfy the Gordon Rule requirements
8. Complete the College Level Academic Skills Test (CLAST)
9. Fulfill the foreign language graduation requirement
10. File an application for degree in the Student Services Office (S&E 234).



.....

• ***Note (effective Fall 2004): In order to submit an Application for Degree:**

• ** Transient Courses are not allowed in the graduating semester.

• **Foreign Language requirement must be completed or you must be enrolled in final courses needed for graduation.

• **CLAST requirement must be fulfilled.

• **Gordon rule writing and math must be completed, or you must be enrolled in courses to complete these at FAU.

.....



ARE YOU SAILING IN THE RIGHT DIRECTION? CAREER PLANNING AND RELATED WEBSITES

Biology:

<http://www.sicb.org>
<http://scilib.ucsd.edu/sio/guide/career.html>
<http://www.microbe.org/careers/careers.asp>
<http://www.bio.com/hr>
<http://www.emporia.edu/biosci/carebiol.htm>

Physics:

<http://www.aip.org/aip/careers/careers.html>
<http://www.aps.org/jobs/>
<http://www.phys-astro.sonoma.edu/people/faculty/tenn/Jobs.html>
<http://careers.iop.org/>

Chemistry:

<http://www.cofc.edu/~chem/seminar/career.html>
<http://www.chemsoc.org/careers/careers.htm>

Mathematics:

<http://www.cmmtypsych.net/career/index.shtml>
<http://www.nvo.com/bhsmath/mathcareers>

Psychology:

<http://www.socialpsychology.org>
<http://www.careerplanning.about.com/careers/careerplanning/library/weekly/aa070798.htm>
<http://web.lemoyne.edu/~hevern/psychref3-4.html>

Geography/Geology:

<http://www.uwosh.edu/departments/geography/careers.html>
<http://geography.about.com/science/geography/msub41.htm>

So you want to be a doctor...

Pre-Health Professional Students should read the **Pre-Health Professions Guidebook** available online at http://www.science.fau.edu/student_services/preprof.html. The Pre-Health Professions Office is located in SE 234. You should plan to take the MCAT (or other Admission exam) exam in your junior year (and after you have completed a **minimum** of 1 year of general biology, 1 year of general chemistry, 1 year of organic chemistry, 1 year of physics, 1 year of college English, and Calculus).

Premed/Pre-Health Professions:

<http://www.science.fau.edu/links.htm>
<http://www.studentdoctor.net>
<http://www.geocities.com/premedsource>
<http://www.prenal.com>
<http://www.aamc.org/>
<http://hometown.aol.com/MedLounge/index.html>
<http://www.acponline.org/>
<http://www.ama-assn.org/>
<http://www.kaplan.com/index.html>
<http://www.review.com/>
http://www.eckerd.edu/academics/nas/premed/MCAT_GPA_List.htm
<http://www.vh.org/>
http://www.nlm.nih.gov/research/visible/visible_human.html
<http://www.nejm.org/content/index.asp>
<http://www.iit.edu/~premed/med9.html>
<http://www.premed.edu/MedGuide.html>



45 Upper Division Credits

All undergraduate students must complete **45 credits hours of upper division coursework**. Upper division courses are considered 3000 level and above. **Most degree programs do not contain the 45 upper required**, so you will have the opportunity to select some upper division electives to complete as part of your degree. It is your responsibility to keep track of your upper division courses so you will know where you stand when it comes time to apply for graduation.

Upper division electives that a Science Major can take:

(There are many, many more in the catalog...these are just some examples)

(These courses have **NO** prerequisites)

ANT 3212- Peoples Around the World	CJC 4310- Corrections
ANT 3312- Native American Culture and Society	AML 3111- American Novel to 1900
ANT 3361- Cultures of South Asia	AML 3121- American Novel since 1900
ANT 3391- Anthropology of Film	AML 3303- Florida Women Writers
ANT 3403- Culture and Ecology	AML 3604- African American Literature to 1895
ANT 3586- Human Evolution	AML 4223- American Literature: 19 th Century Traditions
ANT 4141- Development of Ancient Civilization	AML 4242- American Literature: 20 th Century
ANT 4158- Florida Archaeology	AML 4311- Major American Writers: 19 th Century
ANT 4165- South America before Columbus	AML 4321- Major American Writers: 20 th Century
ANT 4302- Gender and Culture	AML 4605- African American Literature 1895-present
ANT 4315- African American Anthropology	AML 4630- US Latino/a Literatures
ANT 4412- Social Anthropology	AML 4640- American Indian Literature
ANT 4462- Medical Anthropology	AML 4663- Jewish American Literature
ANT 4514- Biological anthropology	AML 4673- Asian American Literature
ANT 4731- Human Epidemiology	ENG 4114- Literature and Film
CHS 3410- Food and Nutrition	ENL 4210- Medieval Literature
COM 3405- Human Communication Theory	ENL 4210- Renaissance Literature
COM 3462- Conflict and Communication	ENL 4234- British Romanticism
COM 3500- Political Communication	ENL 4333- Shakespeare
COM 4201- Corporate Communication	LIT 3313- Science Fiction
COM 4621- News Media Ethics	LIT 3312- Fantasy Literature
FIL 4106-Scriptwriting	LIT 3344- Detective Literature
FIL 4409- Women and Film	LIT 4001- Literary Genres
FIL 4418- Horror Film	LIT 4381- Women in Literature
FIL 4523- Studies in Asian Film	LIT 4434- Literature and the Environment
HSA 3531 – Health Care Medical Terminology	GEO 3314- World of Wines
HSA 4110 – Health Care Organization	MUH 3023- Rock in American Society
HSA 4111 – Health Delivery Systems	MUH 3070- Introduction to Jewish Music
HSA 4113 – Issues and Trends in HealthCare	MUH 3801- Jazz in American Society
HSC 4640 – Health Law (instr. Permission)	MUH 3013- Introduction to Music History
JOU 3117- Print Media Issues	AMH 3400- The American South
JOU 4004- US Journalism	AMH 3420- History of Florida
JOU 4015- Journalism Culture and Criticism	AMH 3560- History of US women
MMC 3601- Minorities and the Media	AMH 3630- American Environmental History
MMC 3709- Sexual Minorities and the Media	AMH 4460- Urban History of the US
MMC 4263- Media, Society and technology	AMH 4544- The Vietnam War
MMC 4301- International Communication	AMH 4574- The Civil Rights Movement
SPC 3360- Interviewing	AMH 4620- Religion in America
SPC 3710- Intercultural Communication	AMH 4580- American Indian History
SPC 4232- Studies in Rhetoric	ASH 3230- Peoples of the Middle East
SPC 4513- Argumentation and Debate	HIS 4201- Peacemaking and Peacekeeping
SPC 4540- Persuasion and Propaganda	HIS 4245- History of Socialism
SPC 4633- Rhetoric of Social Protest	LAH 3130- Latin American Independence
SPC 4712- Gender, Race, and Communication	LAH 4470- History of the Caribbean
SPC 4718- Ethnicity and Communication	WoH 4244- World Was II
CCJ 3014- Criminology	JST 3408- History of Anti-Semitism
CCJ 3024- The Criminal Justice System	JST 3513- Jewish Wisdom
CCJ 3126- Community Service Systems	JST 4115- Biblical Law
CCJ 3660- Crime in Schools	JST 4701- The Holocaust
CCJ 3666- Victimology	CPO 3002- Comparative Politics
CCJ 4450- Criminal Justice Management	CPO 3761- Religions and World Politics
CCJ 4481- Policing in America	CPO 4303- Latin American Politics
CCJ 4642- Organized Crime and the Business of Drugs	INR 3102- American Foreign Policy
CCJ 4670- Women and Criminal Justice	INR 3403- International Law
CCJ 4931- Issues in Criminal Law	INR 4006- War and Peace
	POS 3693- Women and the Law

Long-Term Planning Sheet

FALL

SPRING

SUMMER

<hr/> <hr/> <hr/> <hr/> <hr/> <hr/> <hr/> <hr/> <hr/> <hr/>	<hr/> <hr/> <hr/> <hr/> <hr/> <hr/> <hr/> <hr/> <hr/> <hr/>	
<hr/> <hr/> <hr/> <hr/> <hr/> <hr/> <hr/> <hr/> <hr/> <hr/>	<hr/> <hr/> <hr/> <hr/> <hr/> <hr/> <hr/> <hr/> <hr/> <hr/>	
<hr/> <hr/> <hr/> <hr/> <hr/> <hr/> <hr/> <hr/> <hr/> <hr/>	<hr/> <hr/> <hr/> <hr/> <hr/> <hr/> <hr/> <hr/> <hr/> <hr/>	
<hr/> <hr/> <hr/> <hr/> <hr/> <hr/> <hr/> <hr/> <hr/> <hr/>	<hr/> <hr/> <hr/> <hr/> <hr/> <hr/> <hr/> <hr/> <hr/> <hr/>	

CREATE YOUR CLASS SCHEDULE HERE:

	MONDAY	TUESDAY	WEDNESDAY	THURSDAY	FRIDAY
8:00am					
9:00am					
10:00am					
11:00am					
12:00pm					
1:00pm					
2:00pm					
3:00pm					
4:00pm					
5:00pm					
6:00pm					
7:00pm					
8:00pm					